



**IBT BioServices**  
**20358 Seneca Meadows Parkway**  
**Germantown, MD 20876**  
**240-454-8934 x229**  
**Services@integratedbiotherapeutics.com**

## Ebolavirus Zaire (ZEBOV) Antibody

**Catalog #:** 01-0004

**Lot #:** ZE200909IBT

**Immunogen:** ZEBOV Virus-like Particles containing glycoprotein (GP), nucleoprotein (NP), and viral protein (VP)40

**Description:** Rabbit polyclonal for Ebola strain Zaire

**Raised in:** Rabbits

**Clonality:** Polyclonal

**Relevance:** The *filovirus* Ebola is a Category A (NIAID) and HHS Select Agent.

### Recommended Dilutions:

ELISA: Assay-dependent dilution

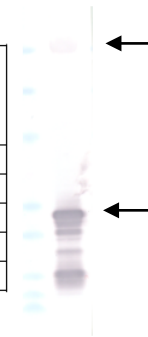
WB: Assay-dependent dilution.

IF: No Data

**Storage:** 2-3 weeks +4°C, -20°C long term

**Cross Reactivity:** Does not react with Venezuelan Equine Encephalitis TC-83, Chikungunya 181/25, Vaccinia NYCBOH, Junin Candid #1, Rift Valley Fever MP12, or Marburgvirus-Musoke.

Dilution of ZEBOV Sera	ZEBOV Coating Antigen	MMARV Coating Antigen
1000	2.27	0.19
3162	1.49	0.05
10000	0.66	0.01
31623	0.15	0.02
100000	0.09	0.00



### ELISA – Ebola Zaire Antibody

- Antigen is coated on ELISA plates overnight.
- Add 200µl blocking buffer then wash wells with PBST.
- Antiserum is diluted in series as 10<sup>2</sup>~10<sup>4</sup> folds.
- Incubate antibody for 2 hour.
- Wash unbound antibodies and add HRP-conjugated anti-rabbit IgG.
- Wash plates and add substrate to develop color for 20 minutes.
- Read absorbance at 650nm. Amount of color is directly proportional to amount of antibodies.
- Antibody titer is defined as >0.1 of absorbance of antiserum minus background.
- Titer ~ 1/59447.

### Western

- Antibody diluted 1:10,000 against GP, VP40; Also detects NP (Data not shown)

**Intended for research use only, not for human, therapeutic, or diagnostic applications.**