



IBT BioServices
20358 Seneca Meadows Parkway
Germantown, MD 20876
240-454-8934 x229
Services@integratedbiotherapeutics.com

Rift Valley Fever Virus (RVFV) Antibody

Catalog #: 01-0001

Lot #: RV200909IBT

Immunogen: Sucrose purified virus (MP12 vaccine strain) from infected supernatant

Description: Rabbit polyclonal for RVFV

Raised in: Rabbits

Clonality: Polyclonal

Relevance: RVFV represents a surrogate strain for the Category A (NIAID) and USDA/HHS Select Agent Rift Valley Fever.

Recommended Dilutions:

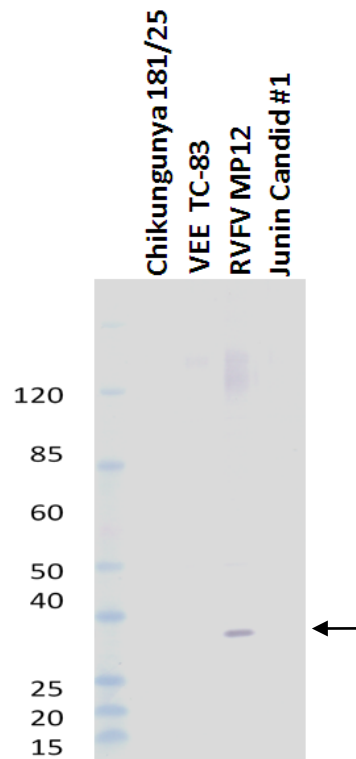
ELISA: Assay-dependent dilution

WB: Assay-dependent dilution. If probing against purified infected cell supernatant, cross-adsorption recommended.

IF: No Data

Storage: 2-3 weeks +4°C, -20°C long term

Species Reactivity: Does not react with Venezuelan Equine Encephalitis TC-83, Chikungunya 181/25, Vaccinia NYCBOH, or Junin Candid #1. Some cross-reactivity observed with fetal bovine serum and Vero cells



-Serum tested against sucrose purified infected cell-supernatant
-Serum diluted 1:10,000 and incubated with 2% FBS for 2hr
Prior to blotting

Intended for research use only, not for human, therapeutic, or diagnostic applications.