



IBT BioServices
20358 Seneca Meadows Parkway
Germantown, MD 20876
240-454-8934 x229
Services@integratedbiotherapeutics.com

Japanese Enceph 14-14-2 Antibody

Catalog #: 01-0007

Lot #: JE200909IBT

Immunogen: Sucrose purified virus (JE 14-14-2 vaccine strain) from infected supernatant;

Description: Rabbit polyclonal for Japanese Encephalitis

Raised in: Rabbits

Clonality: Polyclonal

Relevance:

JE 14-14-2 represents a surrogate strain for the Category B (NIAID) and USDA Select Agent Japanese Encephalitis.

Recommended Dilutions:

ELISA: Assay-dependent dilution

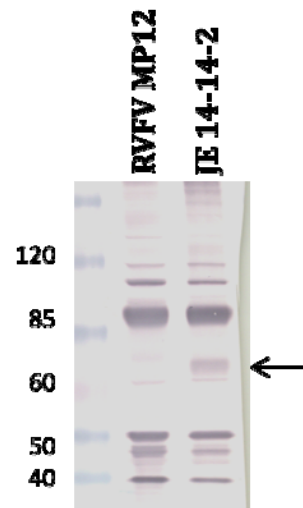
WB: Assay-dependent dilution. If probing against purified infected cell supernatant, cross-adsorption recommended.

IF: No Data

Storage: 2-3 weeks +4°C, -20°C long term

Species Reactivity:

Does not react with Venezuelan Equine Encephalitis TC-83, Chikungunya 181/25, Vaccinia NYCBOH, or Rift Valley Fever MP12. Some cross-reactivity observed with fetal bovine serum and Vero cells



-Serum tested against sucrose purified infected cell-supernatant
-Serum diluted 1:1,000 and incubated with 2% FBS for 2hr
Prior to blotting

Intended for research use only, not for human, therapeutic, or diagnostic applications.